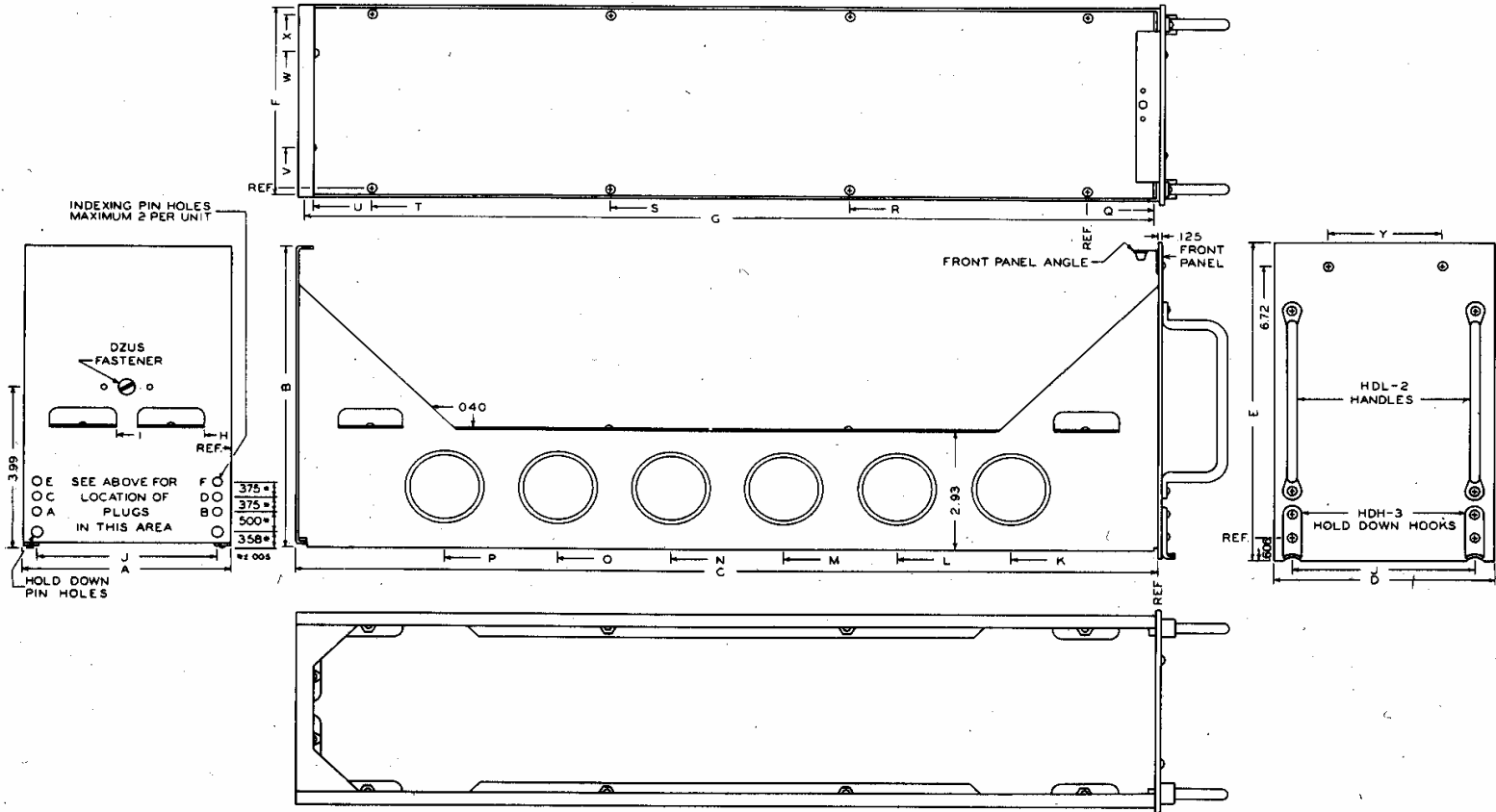


IDENTIFICATION OF CONNECTOR POSITIONS



**Large ATR Chassis**

Churchill Corporation ~ 1-800-225-3932 ~ www.atrbox.com

### Large ATR Chassis

Catalog No.	Part of ARINC Spec. No. 404 Designation	Connector		Plug Float Mechanisms		Chassis			Front Panel		Deck Plate			H	I	J	K	L	M	N	O	P	Q	R	S	T	U	V	W	X	Y	Weight																																					
		Type	Fig.	Supplied	Quan	Type	W	H	L	W	H	W	L																			H	I	J	K	L	M	N	O	P	Q	R	S	T	U	V	W	X	Y	Lbs	Oz																		
							±.016	±.016	±.016	±.016	±.016	±.016	±.016																																							±.016	±.032	±.032	±.010	±.032	±.032	±.032	±.032	±.032	±.010	±.010	±.010	±.010	±.010	±.010	±.010	±.010	±.010
							A	B	C	D	E	F	G																																																								
C-S311	Short 1/2 ATR	DPA	1	-	-	4.72	7.38	12.40	4.97	7.80	4.50	12.13	0.61	2.61	4.13	3.18	6.10	9.18	0	0	0	1.41	4.63	9.25	0	10.53	0.94	3.19	4.13	2.50	1	8																																					
C-L311	Long 1/2 ATR	DPA	1	-	-	4.72	7.28	19.40	4.97	7.80	4.50	19.13	0.61	2.61	4.13	3.27	5.84	8.40	10.96	13.52	16.08	1.44	5.41	10.81	16.22	17.50	0.94	3.19	4.13	2.50	1	13																																					
C-S312	Short 1/2 ATR	DPA	2	2	PFM-2	4.72	7.38	12.40	4.97	7.80	4.50	12.13	0.61	2.61	4.13	3.18	6.18	9.18	0	0	0	1.41	4.63	9.25	0	10.53	0.94	3.19	4.13	2.50	1	8																																					
C-L312	Long 1/2 ATR	DPA	2	2	PFM-2	4.72	7.28	19.40	4.97	7.80	4.50	19.13	0.61	2.61	4.13	3.27	5.84	8.40	10.96	13.52	16.08	1.44	5.41	10.81	16.22	17.50	0.94	3.19	4.13	2.50	1	13																																					
C-S321	Short 1/2 ATR	DPD	5	-	-	4.72	7.38	12.40	4.97	7.80	4.50	12.13	0.61	2.61	4.13	3.18	6.18	9.18	0	0	0	1.41	4.63	9.25	0	10.53	0.94	3.19	4.13	2.50	1	8																																					
C-L321	Long 1/2 ATR	DPD	5	-	-	4.72	7.38	19.40	4.97	7.80	4.50	19.13	0.61	2.61	4.13	3.27	5.84	8.40	10.96	13.52	16.08	1.44	5.41	10.81	16.22	17.50	0.94	3.19	4.13	2.50	1	13																																					
C-S331	Short 1/2 ATR	DPXB	3	-	-	4.72	7.38	12.40	4.97	7.80	4.50	12.13	0.61	2.61	4.13	3.18	6.18	9.18	0	0	0	1.41	4.63	9.25	0	10.53	0.94	3.19	4.13	2.50	1	8																																					
C-L331	Long 1/2 ATR	DPXB	3	-	-	4.72	7.38	19.40	4.97	7.80	4.50	19.13	0.61	2.61	4.13	3.27	5.84	8.40	10.96	13.52	16.08	1.44	5.41	10.81	16.22	17.50	0.94	3.19	4.13	2.50	1	13																																					
C-S332	Short 1/2 ATR	DPX2B	4	-	-	4.72	7.38	12.40	4.97	7.80	4.50	12.13	-	-	4.13	3.18	6.18	9.18	0	0	0	1.41	4.63	9.25	0	10.53	0.56	3.56	4.13	2.50	1	7																																					
C-L332	Long 1/2 ATR	DPX2B	4	-	-	4.72	7.38	19.40	4.97	7.80	4.50	19.13	-	-	4.13	3.27	5.84	8.40	10.96	13.52	16.08	1.44	5.41	10.81	16.22	17.50	0.56	3.56	4.13	2.50	1	12																																					
C-S411	Short 3/4 ATR	DPA	1	-	-	7.36	7.38	12.40	7.59	7.80	7.13	12.13	0.92	2.61	4.13	3.18	6.18	9.18	0	0	0	1.41	4.63	9.25	0	10.53	1.38	5.38	6.75	2.50	1	15																																					
C-L411	Long 3/4 ATR	DPA	1	-	-	7.35	7.38	19.40	7.59	7.80	7.13	19.13	0.92	2.61	4.13	3.27	5.84	8.40	10.96	13.52	16.08	1.44	5.41	10.81	16.22	17.50	1.38	5.38	6.75	2.50	2	4																																					
C-S412	Short 3/4 ATR	DPA	2	2	PFM-2	7.35	7.38	12.40	7.59	7.80	7.13	12.13	0.92	2.61	4.13	3.18	6.18	9.18	0	0	0	1.41	4.63	9.25	0	10.53	1.38	5.38	6.75	2.50	1	15																																					
C-L412	Long 3/4 ATR	DPA	2	2	PFM-2	7.35	7.38	19.40	7.59	7.80	7.13	19.13	0.92	2.61	4.13	3.27	5.84	8.40	10.96	13.52	16.08	1.44	5.41	10.81	16.22	17.50	1.38	5.38	6.75	2.50	2	4																																					
C-S413	Short 3/4 ATR	DPA	6	2	PFM-4	7.35	7.38	12.40	7.59	7.80	7.13	12.13	0.92	2.61	4.13	3.18	6.18	9.18	0	0	0	1.41	4.63	9.25	0	10.53	1.38	5.38	6.75	2.50	1	15																																					
C-L413	Long 3/4 ATR	DPA	6	2	PFM-4	7.35	7.38	19.40	7.59	7.80	7.13	19.13	0.92	2.61	4.13	3.27	5.84	8.40	10.96	13.52	16.08	1.44	5.41	10.81	16.22	17.50	1.38	5.38	6.75	2.50	2	4																																					
C-S421	Short 3/4 ATR	DPD	5	-	-	7.35	7.38	12.40	7.59	7.80	7.13	12.13	0.92	2.61	4.13	3.18	6.18	9.18	0	0	0	1.41	4.63	9.25	0	10.53	1.38	5.38	6.75	2.50	1	15																																					
C-L421	Long 3/4 ATR	DPD	5	-	-	7.35	7.38	19.40	7.59	7.80	7.13	19.13	0.92	2.61	4.13	3.27	5.84	8.40	10.96	13.52	16.08	1.44	5.41	10.81	16.22	17.50	1.38	5.38	6.75	2.50	2	4																																					
C-S431	Short 3/4 ATR	DPXB	3	-	-	7.35	7.38	12.40	7.59	7.80	7.13	12.13	0.92	2.61	4.13	3.18	6.18	9.18	0	0	0	1.41	4.63	9.25	0	10.53	1.38	5.38	6.75	2.50	1	15																																					
C-L431	Long 3/4 ATR	DPXB	3	-	-	7.35	7.38	19.40	7.59	7.80	7.13	19.13	0.92	2.61	4.13	3.27	5.84	8.40	10.96	13.52	16.08	1.44	5.41	10.81	16.22	17.50	1.38	5.38	6.75	2.50	2	4																																					
C-S432	Short 3/4 ATR	DPX2B	4	-	-	7.35	7.38	12.40	7.59	7.80	7.13	12.13	0.92	2.61	4.13	3.18	6.18	9.18	0	0	0	1.41	4.63	9.25	0	10.53	1.38	5.38	6.75	2.50	1	14																																					
C-L432	Long 3/4 ATR	DPX2B	4	-	-	7.35	7.38	19.40	7.59	7.80	7.13	19.13	0.92	2.61	4.13	3.27	5.84	8.40	10.96	13.52	16.08	1.44	5.41	10.81	16.22	17.50	1.38	5.38	6.75	2.50	2	3																																					
C-S436	Short 3/4 ATR	DPXB	7	4	PFM-5	7.35	7.38	12.40	7.59	7.80	7.13	12.13	0.92	2.61	4.13	3.18	6.18	9.18	0	0	0	1.41	4.63	9.25	0	10.53	1.38	5.38	6.75	2.50	1	15																																					
C-L436	Long 3/4 ATR	DPXB	7	4	PFM-5	7.35	7.38	19.40	7.59	7.80	7.13	19.13	0.92	2.61	4.13	3.27	5.84	8.40	10.96	13.52	16.08	1.44	5.41	10.81	16.22	17.50	1.38	5.38	6.75	2.50	2	4																																					
C-S437	Short 3/4 ATR	DPX2B	8	4	PFM-5	7.35	7.38	12.40	7.59	7.80	7.13	12.13	2.92	2.61	4.13	3.18	6.18	9.18	0	0	0	1.41	4.63	9.25	0	10.53	3.38	0	6.75	2.50	1	13																																					
C-L437	Long 3/4 ATR	DPX2B	8	4	PFM-5	7.35	7.38	19.40	7.59	7.80	7.13	19.13	2.92	2.61	4.13	3.27	5.84	8.40	10.96	13.52	16.08	1.44	5.41	10.81	16.22	17.50	3.38	0	6.75	2.50	2	2																																					

If Indexing Holes are desired (see figs. 1,2,5,6 above) add required letters A thru F to end of catalog number

For complete Case (chassis and dust cover assembly) omit (C-) from catalog number

Full and 1 1/2 width chassis, although not stocked, are available with prompt delivery