

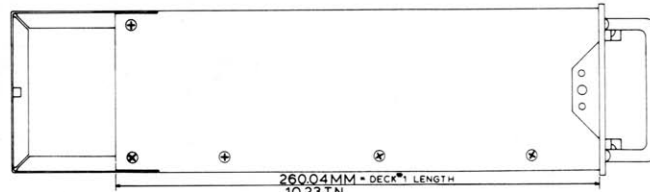
# ARINC 600 (2 & 3 Size) Chassis

344 Franklin St. • PO Box 761038 • Melrose, MA 02176-0907 • Tel: 781-665-4700 • Toll Free 1-800-225-3932 • Fax: 781-662-5291 • sales@atrbox.com • www.atrbox.com

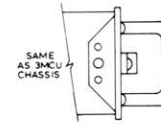
CATALOG NO	PART OF ARINC SPEC NO 600 DESIGNATION	CONNECTOR TYPE	SHELL SIZE	REAR PANEL				DECK PLATE		WEIGHT KG LBS - OZ
				A MM IN	B MM IN	C MM IN	D MM IN	E MM IN	F MM IN	
C-2MCU-11	2MCU	BKAD/E	1	27.30 1.07	54.61 2.15	39.54 1.5	16.63 .65	39.69 1.56	0.13	
C-2MCU-12	2MCU		2					36.85 1.33		
C-3MCU-11	3MCU		1	43.94 1.73	87.88 3.46	72.82 2.86	16.63 .65	56.7 2.23	1.4	
C-3MCU-12	3MCU		2					53.85 1.93		
C-3MCU-13	3MCU		3					51.03 1.81		

FOR COMPLETE CASE (CHASSIS AND DUST COVER ASSEMBLY) REPLACE (C) FROM CATALOG NUMBER WITH (A)

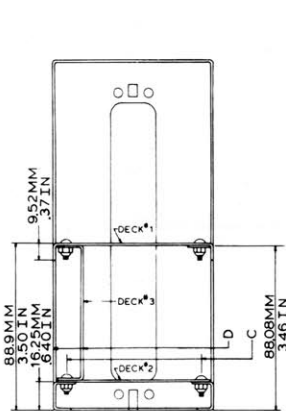
2 AND 3 MCU CHASSIS



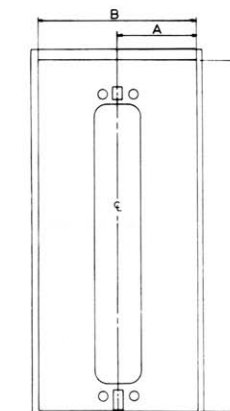
3MCU TOP VIEW



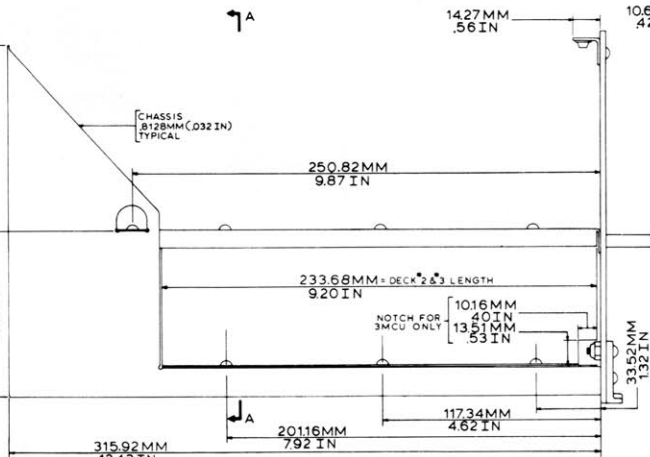
2MCU TOP VIEW



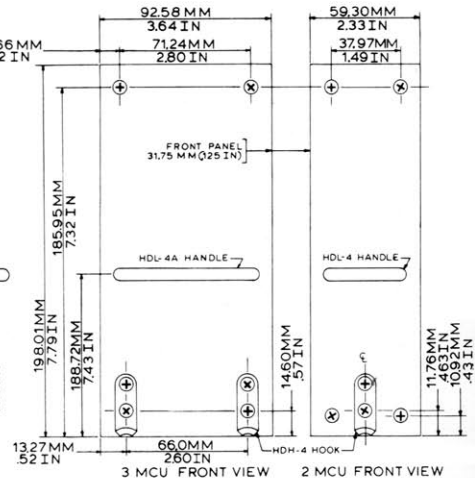
THIS SECTION SHOWS SHELL SIZE 1 CUTOUT ONLY. OTHER SHELL SIZE CUTOUTS AVAILABLE.  
A-A



THIS VIEW SHOWS SHELL SIZE 1 CUTOUT ONLY. OTHER SHELL SIZE CUTOUTS AVAILABLE.  
2 & 3 MCU REAR VIEW

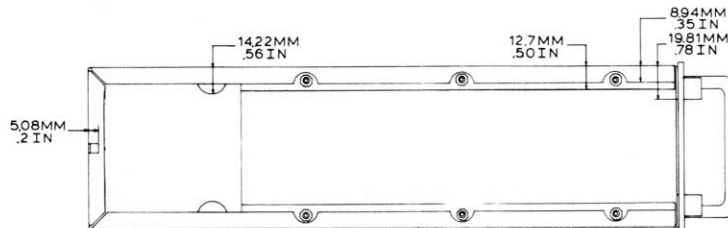


2 & 3 MCU SIDE VIEW

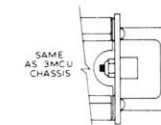


3MCU FRONT VIEW 2MCU FRONT VIEW

2 & 3 MCU CHASSIS



3MCU BOTTOM VIEW



2MCU BOTTOM VIEW

MATERIAL: ALUMINUM 5052H32  
FRONT PANEL: 31.75MM (1.25 IN)  
SIDES, DECK, BACK & PANEL ANGLE: 81.28MM (3.22 IN)

FINISH: CAUSTIC ETCH, IRIDITE NO. 604, PRIME BLACK WHITING ON FRONT FACE AND EDGES OF FRONT PANEL ONLY.

NOTES: 1. ALL OUTSIDE DIMENSIONS INCLUDE PAINT AND THICKNESS TOLERANCE FOR SHEET ALUM.  
2. SCREWS NO. 8 & 6

CATALOG NOS:  
C-2MCU-11  
C-2MCU-12  
C-3MCU-11  
C-3MCU-12  
C-3MCU-13