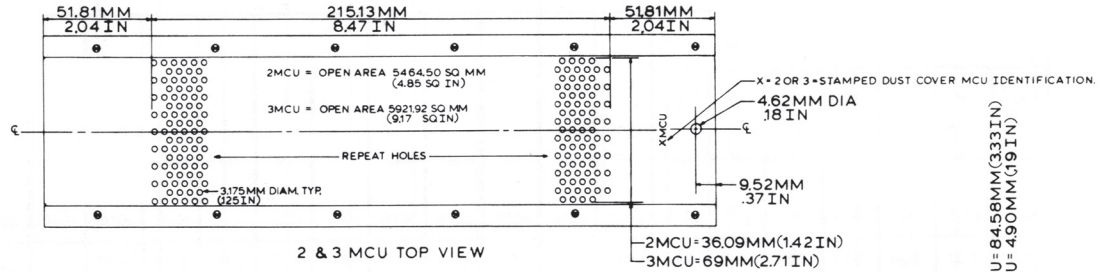


ARINC 600 (2 & 3 Size) Dust Cover

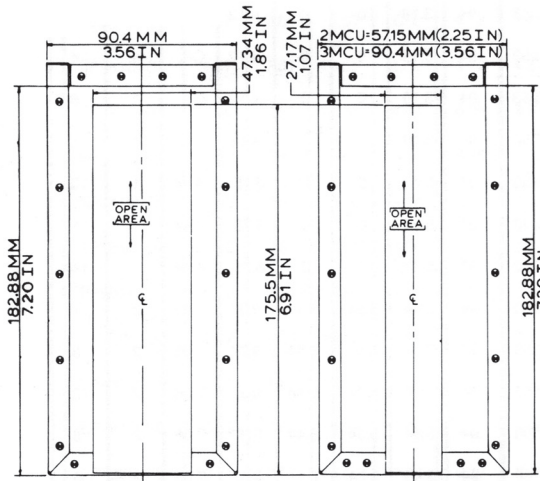
344 Franklin St. • PO Box 761038 • Melrose, MA 02176-0907 • Tel: 781-665-4700 • Toll Free 1-877-390-3932 • Fax: 781-662-5291 • sales@atrbox.com • www.atrbox.com

CATALOG NO	PART OF ARINC SPEC NO 600 DESIGNATION	ACCOMODATES CHASSIS WITH CONNECTOR TYPE	SHELL SIZE	WEIGHT	
				KG	LBS-OZ
D-2MCU-11	2MCU	BKAD _E	1	3969	0-14
D-2MCU-12	2MCU	BKAD _E	2	3685	0-13
D-3MCU-11	3MCU	BKAD _E	1	4536	0-15
D-3MCU-12	3MCU	BKAD _E	2	4252	0-15
D-3MCU-13	3MCU	BKAD _E	3	3969	0-14

FOR COMPLETE CASE (CHASSIS AND DUST COVER ASSEMBLY) REPLACE (D-) FROM CATALOG NUMBER WITH (A-)

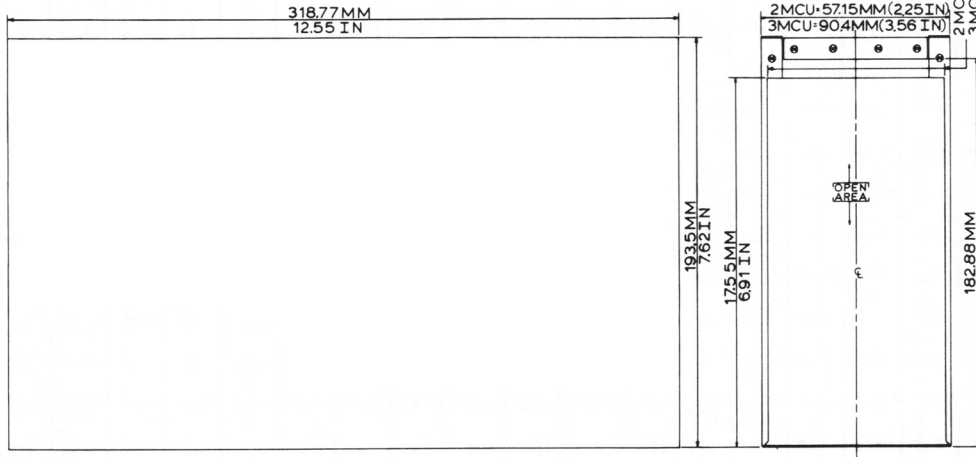


2 & 3 MCU TOP VIEW



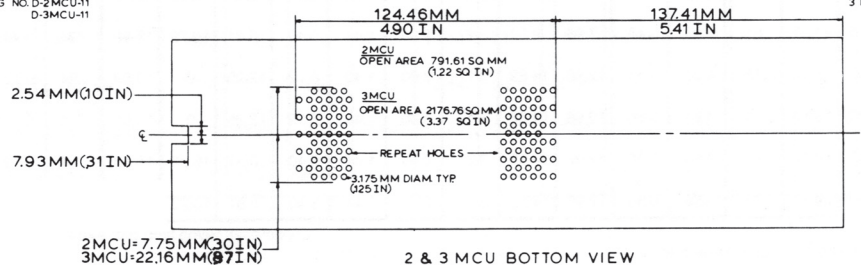
3 MCU REAR VIEW
SHELL SIZE 2 CUTOUT
CATALOG NO D-3MCU-12

2 & 3 MCU REAR VIEW
SHELL SIZE 1 CUTOUT
CATALOG NO. D-2MCU-11
D-3MCU-11



2 & 3 MCU SIDE VIEW

2 & 3 MCU REAR VIEW
2 MCU SHELL SIZE 2 CUTOUT, CATALOG NO D-2MCU-12
3 MCU SHELL SIZE 3 CUTOUT, CATALOG NO D-3MCU-13



2 & 3 MCU BOTTOM VIEW

2 & 3 MCU DUST COVER
ALL MATERIAL .8128MM (.032 IN)

MATERIAL: ALUMINUM 5052H32-.8128MM (.032 IN)
FINISH: NO.606, OUTSIDE BAKED BLACK WRINKLE, INSIDE BAKED FLAT BLACK
NOTE: ALL OUTSIDE DIMENSIONS INCLUDE PAINT AND THICKNESS TOLERANCE FOR SHEET ALUM.
SYMBOL: ⊙ = APPROXIMATE LOCATION OF SPOT WELD
CATALOG NOS: D-2MCU-11
D-2MCU-12
D-3MCU-11
D-3MCU-12
D-3MCU-13