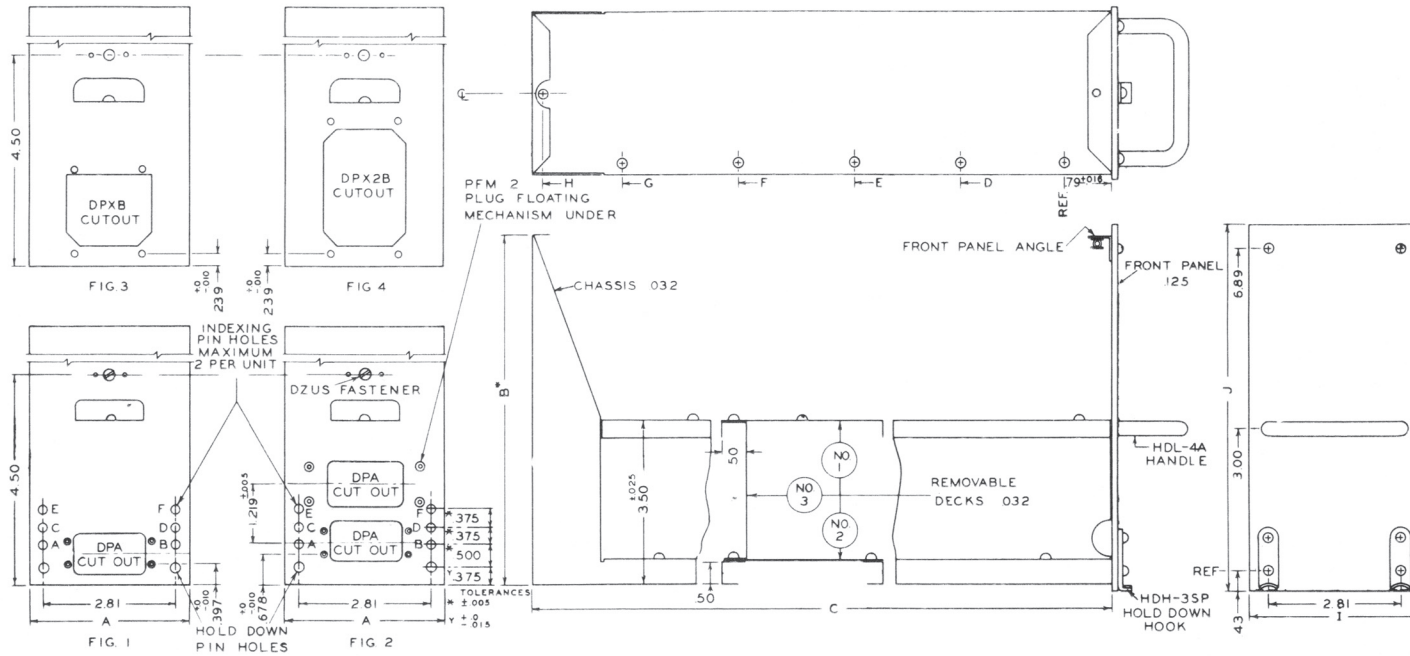


3/8 ATR Chassis

344 Franklin St. • PO Box 761038 • Melrose, MA 02176-0907 • Tel: 781-665-4700 • Toll Free 1-877-390-3932 • Fax: 781-662-5291 • sales@atrbox.com • www.atrbox.com



Catalog No.	Part of ARINC Spec. No. 404 Designation	Connector		Chassis			Length			Deck Plates					Front Panel		Weight	
		Type	Fig.	W A	H B	L C	No.1	No.2	No.3	D	E	F	G	H	I	J	Lbs	Oz
C-S211	Short 3/8 ATR	DPA	1	3.46	7.40	12.43	12.37	10.90	10.87	4.50	8.25	0	0	11.32	3.65	7.80	1	3
C-L211	Long 3/8 ATR	DPA	1	3.46	7.40	19.43	19.37	17.90	17.87	3.75	7.50	12.00	15.75	18.32	2.34	7.80	1	8
C-S212	Short 3/8 ATR	DPA	2	3.46	7.40	12.43	12.37	10.90	10.87	4.50	8.25	0	0	11.32	2.34	7.80	1	3
C-L212	Long 3/8 ATR	DPA	2	3.46	7.40	19.43	19.37	17.90	17.87	3.75	7.50	12.00	15.75	18.32	2.34	7.80	1	8
C-S231	Short 3/8 ATR	DPXB	3	3.46	7.40	12.43	12.37	10.90	10.87	4.50	8.25	0	0	11.32	2.34	7.80	1	3
C-L231	Long 3/8 ATR	DPXB	3	3.46	7.40	19.43	19.37	17.90	17.87	3.75	7.50	12.00	15.75	18.32	2.34	7.80	1	8
C-S232	Short 3/8 ATR	DPX2B	4	3.46	7.40	12.43	12.37	10.90	10.87	4.50	8.25	0	0	11.32	2.34	7.80	1	2
C-L232	Long 3/8 ATR	DPX2B	4	3.46	7.40	19.43	19.37	17.90	17.87	3.75	7.50	12.00	15.75	18.32	2.34	7.80	1	7

If Indexing Holes are desired (see figs. 1 & 2) add required letters A thru D to end of catalog number

For complete Case (chassis and dust cover assembly) omit (C-) from catalog number