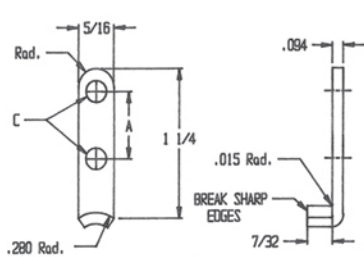
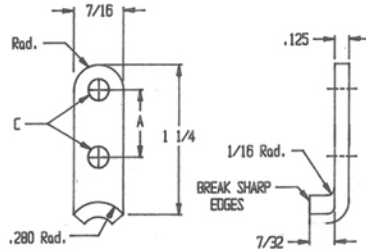


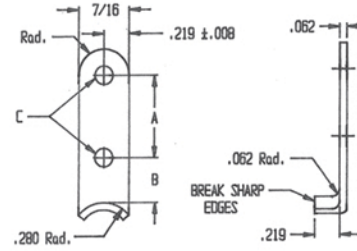
TYPE 3 (-228)



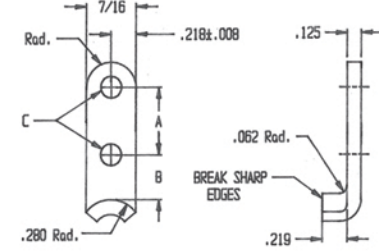
TYPE 1



TYPE 2



TYPE 3



TYPE 4

CATALOG NO		A	B	C	MAX LOADING PER HOOK LBS	MATERIAL ALLOY	HEAT TREAT	MAGNETIC PROPERTIES	FINISH	MEET SPECIFICATIONS	
PIERCED	BLANK									MILITARY	COMMERCIAL
HDH-1	HDH-1B	.562	-	.182	20 & BELOW	SS 304	-	NONE	PASSIVATE	MIL-C-172B	ARINC 404/600
HDH-2	HDH-2B	.562	-	.182	ABOVE 20	SS 304	-	NONE	PASSIVATE	MIL-C-172B	ARINC 404/600
HDH-3	HDH-3B	.562	.375	.182	20 & BELOW	SS 410	125000 PSI	YES	PASSIVATE	MIL-C-172B	ARINC 404/600
HDH-3EP	-	.562	.500	.182	20 & BELOW	SS 410	125000 PSI	YES	PASSIVATE	-	-
HDH-3SP	-	.687	.265	.156	20 & BELOW	SS 410	125000 PSI	YES	PASSIVATE	MIL-C-172B	ARINC 404/600
HDH-3-228	-	1.50	.335	.156	20 & BELOW	SS 410	125000 PSI	YES	PASSIVATE	-	-
HDH-4	HDH-4B	.562	.375	.182	ABOVE 20	SS 410	125000 PSI	YES	PASSIVATE	MIL-C-172B	ARINC 404/600
HDH-4EP	-	.562	.437	.182	ABOVE 20	SS 410	125000 PSI	YES	PASSIVATE	-	-
HDH-4SP	-	.687	.265	.156	ABOVE 20	SS 410	125000 PSI	YES	PASSIVATE	-	-