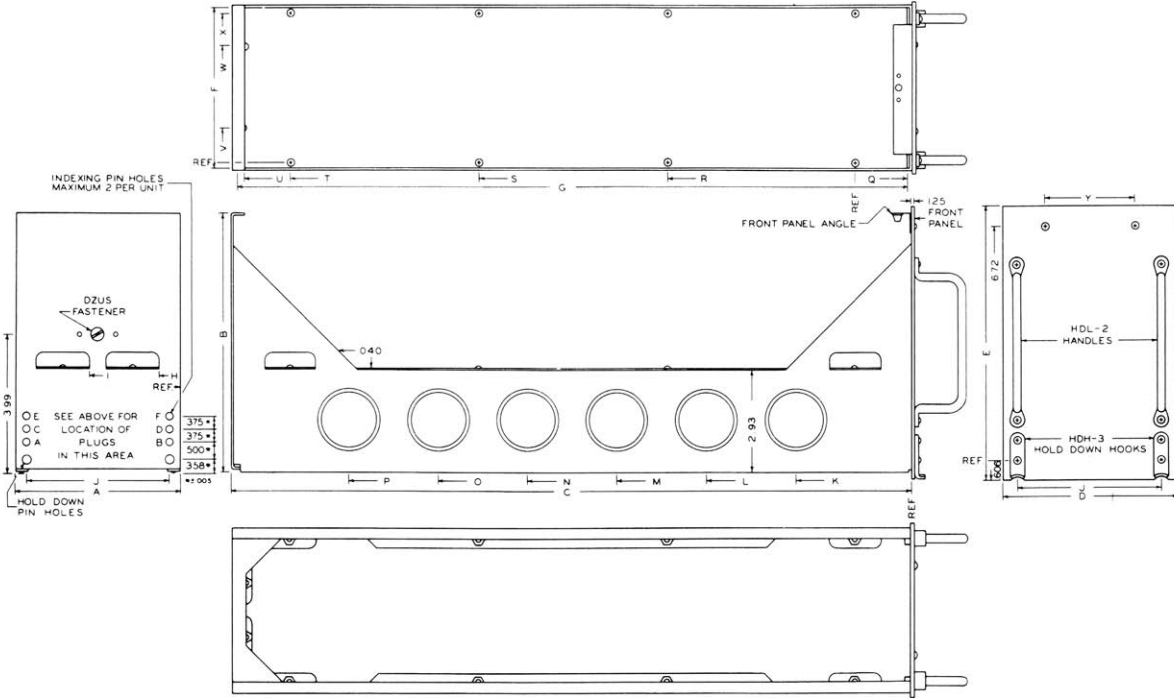
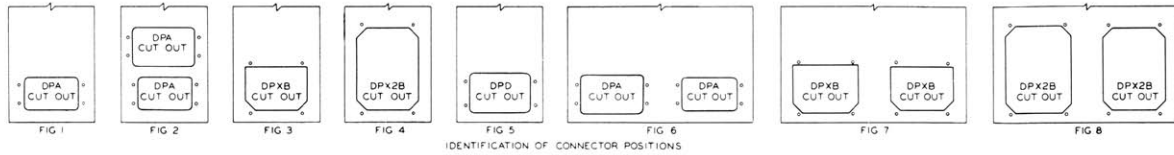


# Large ATR Chassis

344 Franklin St. • PO Box 761038 • Melrose, MA 02176-0907 • Tel: 781-665-4700 • Toll Free 1-800-225-3932 • Fax: 781-662-5291 • sales@atrbox.com • www.atrbox.com



Catalog No.	Part of ARINC Designation	Uses Connector	Plug Float Mechanisms Supplied	Chassis																Front Panel				Deck Plate				Weight		
				W	H	L	W	H	W	L	H	I	J	K	L	M	N	O	P	Q	R	S	T	U	V	W	X	Y	Lbs	Oz
				±016	±016	±016	±016	±016	±016	±032	±032	±010	±032	±032	±032	±032	±032	±032	±010	±010	±010	±010	±010	±010	±010	±010	±010	±010	±010	±010
C-S311	Short 1/2 ATR	DPA	1	4.72	7.38	12.40	4.97	7.60	4.50	12.13	.61	2.61	4.13	3.18	6.10	9.18	0	0	0	1.41	4.63	9.25	0	10.53	.94	3.19	4.13	2.50	1	8
C-L311	Long 1/2 ATR	DPA	1	4.72	7.28	19.40	4.97	7.80	4.50	19.13	.61	2.61	4.13	3.27	5.84	8.40	10.96	13.52	16.08	1.44	5.41	10.81	16.22	17.50	.94	3.19	4.13	2.50	1	13
C-S312	Short 1/2 ATR	DPA	2	4.72	7.38	12.40	4.97	7.80	4.50	12.13	.61	2.61	4.13	3.18	6.18	9.18	0	0	0	1.41	4.63	9.25	0	10.53	.94	3.19	4.13	2.50	1	8
C-L312	Long 1/2 ATR	DPA	2	4.72	7.28	19.40	4.97	7.80	4.50	19.13	.61	2.61	4.13	3.27	5.84	8.40	10.96	13.52	16.08	1.44	5.41	10.81	16.22	17.50	.94	3.19	4.13	2.50	1	13
C-S321	Short 1/2 ATR	DPD	5	4.72	7.38	12.40	4.97	7.80	4.50	12.13	.61	2.61	4.13	3.18	6.18	9.18	0	0	0	1.41	4.63	9.25	0	10.53	.94	3.19	4.13	2.50	1	8
C-L321	Long 1/2 ATR	DPD	5	4.72	7.38	19.40	4.97	7.80	4.50	19.13	.61	2.61	4.13	3.27	5.84	8.40	10.96	13.52	16.08	1.44	5.41	10.81	16.22	17.50	.94	3.19	4.13	2.50	1	13
C-S331	Short 1/2 ATR	DPXB	3	4.72	7.38	12.40	4.97	7.80	4.50	12.13	.61	2.61	4.13	3.18	6.18	9.18	0	0	0	1.41	4.63	9.25	0	10.53	.94	3.19	4.13	2.50	1	8
C-L331	Long 1/2 ATR	DPXB	3	4.72	7.38	19.40	4.97	7.80	4.50	19.13	.61	2.61	4.13	3.27	5.84	8.40	10.96	13.52	16.08	1.44	5.41	10.81	16.22	17.50	.94	3.19	4.13	2.50	1	13
C-S332	Short 1/2 ATR	DPX2B	4	4.72	7.38	12.40	4.97	7.80	4.50	12.13	.61	2.61	4.13	3.18	6.18	9.18	0	0	0	1.41	4.63	9.25	0	10.53	.56	3.56	4.13	2.50	1	7
C-L332	Long 1/2 ATR	DPX2B	4	4.72	7.38	19.40	4.97	7.80	4.50	19.13	.61	2.61	4.13	3.27	5.84	8.40	10.96	13.52	16.08	1.44	5.41	10.81	16.22	17.50	.56	3.56	4.13	2.50	1	12
C-S411	Short 3/4 ATR	DPA	1	7.35	7.38	12.40	7.59	7.80	7.13	12.13	.92	2.61	4.13	3.18	6.18	9.18	0	0	0	1.41	4.63	9.25	0	10.53	1.38	5.38	6.75	2.50	1	15
C-L411	Long 3/4 ATR	DPA	1	7.35	7.38	19.40	7.59	7.80	7.13	19.13	.92	2.61	4.13	3.27	5.84	8.40	10.96	13.52	16.08	1.44	5.41	10.81	16.22	17.50	1.38	5.38	6.75	2.50	2	4
C-S412	Short 3/4 ATR	DPA	2	7.35	7.38	12.40	7.59	7.80	7.13	12.13	.92	2.61	4.13	3.18	6.18	9.18	0	0	0	1.41	4.63	9.25	0	10.53	1.38	5.38	6.75	2.50	1	15
C-L412	Long 3/4 ATR	DPA	2	7.35	7.38	19.40	7.59	7.80	7.13	19.13	.92	2.61	4.13	3.27	5.84	8.40	10.96	13.52	16.08	1.44	5.41	10.81	16.22	17.50	1.38	5.38	6.75	2.50	2	4
C-S413	Short 3/4 ATR	DPA	6	7.35	7.38	12.40	7.59	7.80	7.13	12.13	.92	2.61	4.13	3.18	6.18	9.18	0	0	0	1.41	4.63	9.25	0	10.53	1.38	5.38	6.75	2.50	1	15
C-L413	Long 3/4 ATR	DPA	6	7.35	7.38	19.40	7.59	7.80	7.13	19.13	.92	2.61	4.13	3.27	5.84	8.40	10.96	13.52	16.08	1.44	5.41	10.81	16.22	17.50	1.38	5.38	6.75	2.50	2	4
C-S421	Short 3/4 ATR	DPD	5	7.35	7.38	12.40	7.59	7.80	7.13	12.13	.92	2.61	4.13	3.18	6.18	9.18	0	0	0	1.41	4.63	9.25	0	10.53	1.38	5.38	6.75	2.50	1	15
C-L421	Long 3/4 ATR	DPD	5	7.35	7.38	19.40	7.59	7.80	7.13	19.13	.92	2.61	4.13	3.27	5.84	8.40	10.96	13.52	16.08	1.44	5.41	10.81	16.22	17.50	1.38	5.38	6.75	2.50	2	4
C-S431	Short 3/4 ATR	DPXB	3	7.35	7.38	12.40	7.59	7.80	7.13	12.13	.92	2.61	4.13	3.18	6.18	9.18	0	0	0	1.41	4.63	9.25	0	10.53	1.38	5.38	6.75	2.50	1	15
C-L431	Long 3/4 ATR	DPXB	3	7.35	7.38	19.40	7.59	7.80	7.13	19.13	.92	2.61	4.13	3.27	5.84	8.40	10.96	13.52	16.08	1.44	5.41	10.81	16.22	17.50	1.38	5.38	6.75	2.50	2	4
C-S432	Short 3/4 ATR	DPX2B	4	7.35	7.38	12.40	7.59	7.80	7.13	12.13	.92	2.61	4.13	3.18	6.18	9.18	0	0	0	1.41	4.63	9.25	0	10.53	1.38	5.38	6.75	2.50	1	14
C-L432	Long 3/4 ATR	DPX2B	4	7.35	7.38	19.40	7.59	7.80	7.13	19.13	.92	2.61	4.13	3.27	5.84	8.40	10.96	13.52	16.08	1.44	5.41	10.81	16.22	17.50	1.38	5.38	6.75	2.50	2	3
C-S436	Short 3/4 ATR	DPXB	7	7.35	7.38	12.4	7.59	7.80	7.13	12.13	.92	2.61	4.13	3.18	6.18	9.18	0	0	0	1.41	4.63	9.25	0	10.53	1.38	5.38	6.75	2.50	1	15
C-L436	Long 3/4 ATR	DPXB	7	7.35	7.38	19.40	7.59	7.80	7.13	19.13	.92	2.61	4.13	3.27	5.84	8.40	10.96	13.52	16.08	1.44	5.41	10.81	16.22	17.50	1.38	5.38	6.75	2.50	2	4
C-S437	Short 3/4 ATR	DPX2B	8	7.35	7.38	12.40	7.59	7.60	7.13	12.13	2.92	2.61	4.13	3.18	6.18	9.18	0	0	0	1.41	4.63	9.25	0	10.53	3.38	0	6.75	2.50	1	13
C-L437	Long 3/4 ATR	DPX2B	8	7.35	7.38	19.40	7.59	7.80	7.13	19.13	2.92	2.61	4.13	3.27	5.84	8.40	10.96	13.52	16.08	1.44	5.41	10.81	16.22	17.50	3.38	0	6.75	2.50	2	2

If Indexing Holes are desired (see figs. 1, 2, 5, 6 above) add required letters A thru F to end of catalog number  
 For complete Case (chassis and dust cover assembly) omit (C-) from catalog number  
 Full and 1 1/2 width chassis, altho not stocked, are available with prompt delivery