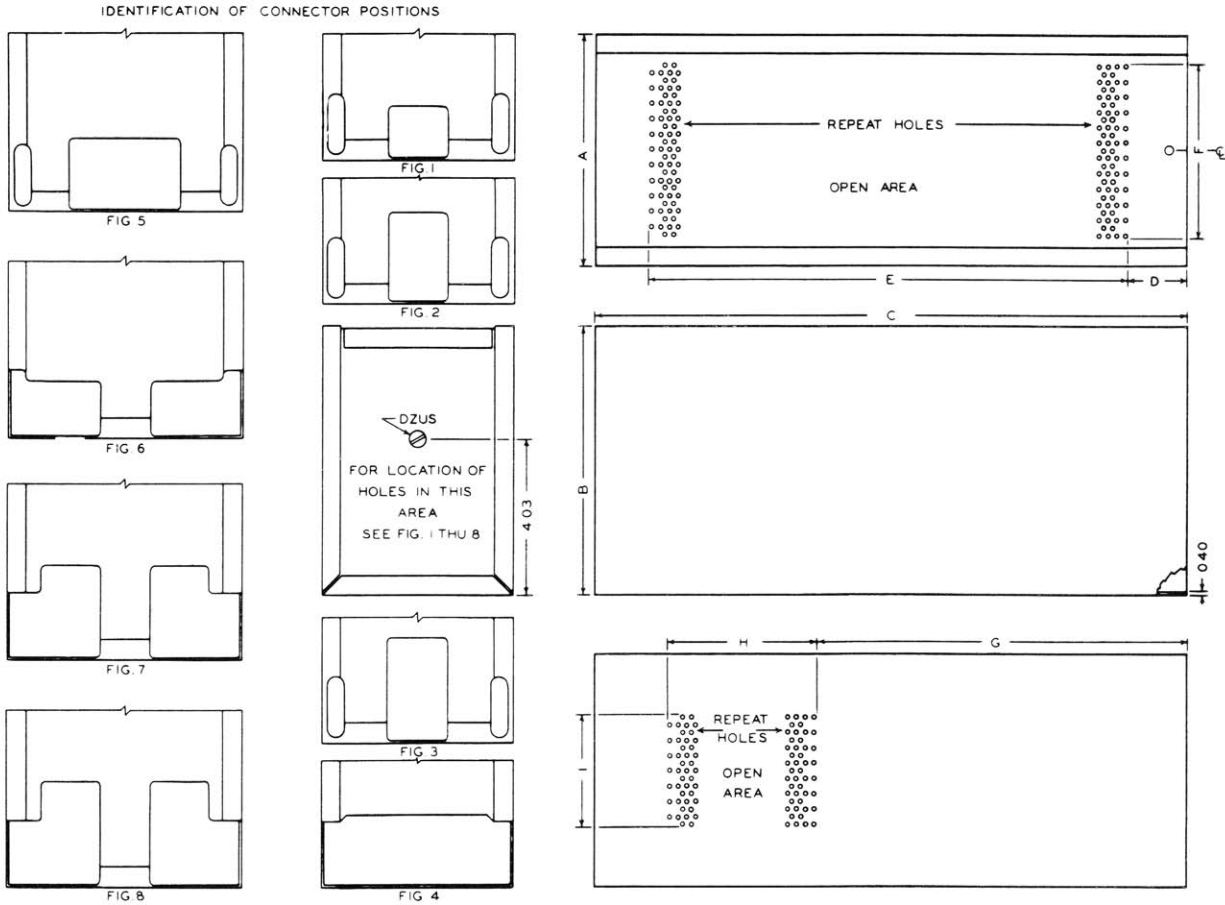


Large ATR Dust Cover

344 Franklin St. • PO Box 761038 • Melrose, MA 02176-0907 • Tel: 781-665-4700 • Toll Free 1-800-225-3932 • Fax: 781-662-5291 • sales@atrbox.com • www.atrbox.com



Catalog No.	Part of ARINC Spec. No. 404 Designation	Accommodates Chassis With Connector		Dust Cover			D	E	F	G	H	I	Ventilation Open Area Sq. In.		Weight	
		Type	Fig.	W	H	L							Top	Bottom	Lbs	Oz
				±016	±016	±016										
D-S311	Short 1/2 ATR	DPA	1	4.88	7.61	12.55	1.25	10.16	3.70	7.76	3.22	2.40	14.90	2.98	1	6
D-L311	Long 1/2 ATR	DPA	1	4.88	7.61	19.55	1.25	17.28	3.70	7.76	10.16	2.40	25.70	9.89	2	4
D-S312	Short 1/2 ATR	DPA	2	4.88	7.61	12.55	1.25	10.16	3.70	7.76	3.22	2.40	14.90	2.98	1	6
D-L312	Long 1/2 ATR	DPA	2	4.88	7.61	19.55	1.25	17.28	3.70	7.76	10.16	2.40	25.70	9.89	2	4
D-S321	Short 1/2 ATR	DPD2B	4	4.88	7.61	12.55	1.25	10.16	3.70	7.76	3.22	2.40	14.90	2.98	1	5
D-L321	Long 1/2 ATR	DPD	4	4.88	7.61	19.55	1.25	17.28	3.70	7.76	10.16	2.40	25.70	9.89	2	3
D-S331	Short 1/2 ATR	DPXB	2	4.88	7.61	12.55	1.25	10.16	3.70	7.76	3.22	2.40	14.90	2.98	1	6
D-L331	Long 1/2 ATR	DPXB	2	4.88	7.61	19.55	1.25	17.28	3.70	7.76	10.16	2.40	25.70	9.89	2	4
D-S332	Short 1/2 ATR	DPX2B	3	4.88	7.61	12.55	1.25	10.16	3.70	7.76	3.22	2.40	14.90	2.98	1	6
D-L332	Long 1/2 ATR	DPX2B	3	4.88	7.61	19.55	1.25	17.28	3.70	7.76	10.16	2.40	25.70	9.89	2	4
D-S411	Short 3/4 ATR	DPA	1	7.50	7.61	12.55	1.25	10.16	5.33	7.13	3.97	5.00	21.50	7.12	1	10
D-L411	Long 3/4 ATR	DPA	1	7.50	7.61	19.55	1.25	17.28	5.33	7.13	10.91	5.00	36.80	21.19	2	8
D-S412	Short 3/4 ATR	DPA	2	7.50	7.61	12.55	1.25	10.16	5.33	7.13	3.97	5.00	21.50	7.12	1	10
D-L412	Long 3/4 ATR	DPA	2	7.50	7.61	19.55	1.25	17.28	5.33	7.13	10.91	5.00	36.80	21.19	2	8
D-S413	Short 3/4 ATR	DPA	6	7.50	7.61	12.55	1.25	10.16	5.33	7.13	3.97	5.00	21.50	7.12	1	10
D-L413	Long 3/4 ATR	DPA	6	7.50	7.61	19.55	1.25	17.28	5.33	7.13	10.91	5.00	36.80	21.19	2	8
D-S421	Short 3/4 ATR	DPA	5	7.50	7.61	12.55	1.25	10.16	5.33	7.13	3.97	5.00	21.50	7.12	1	10
D-L421	Long 3/4 ATR	DPA	5	7.50	7.61	19.55	1.25	17.28	5.33	7.13	10.91	5.00	36.80	21.19	2	8
D-S431	Short 3/4 ATR	DPXB	2	7.50	7.61	12.55	1.25	10.16	5.33	7.13	3.97	5.00	21.50	7.12	1	10
D-L431	Long 3/4 ATR	DPXB	2	7.50	7.61	19.55	1.25	17.28	5.33	7.13	10.91	5.00	36.80	21.19	2	8
D-S432	Short 3/4 ATR	DPX2B	3	7.50	7.61	12.55	1.25	10.16	5.33	7.13	3.97	5.00	21.50	7.12	1	10
D-L432	Long 3/4 ATR	DPX2B	3	7.50	7.61	19.55	1.25	17.28	5.33	7.13	10.91	5.00	36.80	21.19	2	8
D-S436	Short 3/4 ATR	DPXB	7	7.50	7.61	12.55	1.25	10.16	5.33	7.13	3.97	5.00	21.50	7.12	1	9
D-L436	Long 3/4 ATR	DPXB	7	7.50	7.61	19.55	1.25	17.28	5.33	7.13	10.91	5.00	36.80	21.19	2	7
D-S437	Short 3/4 ATR	DPX2B	8	7.50	7.61	12.55	1.25	10.16	5.33	7.13	3.97	5.00	21.50	7.12	1	9
D-L437	Long 3/4 ATR	DPX2B	8	7.50	7.61	19.55	1.25	17.28	5.33	7.13	10.91	5.00	36.80	21.19	2	7

For complete Case (chassis and dust cover assembly) omit (D-) from catalog number
 Full and 1 1/2 width dust covers, altho not stocked, are available with prompt delivery