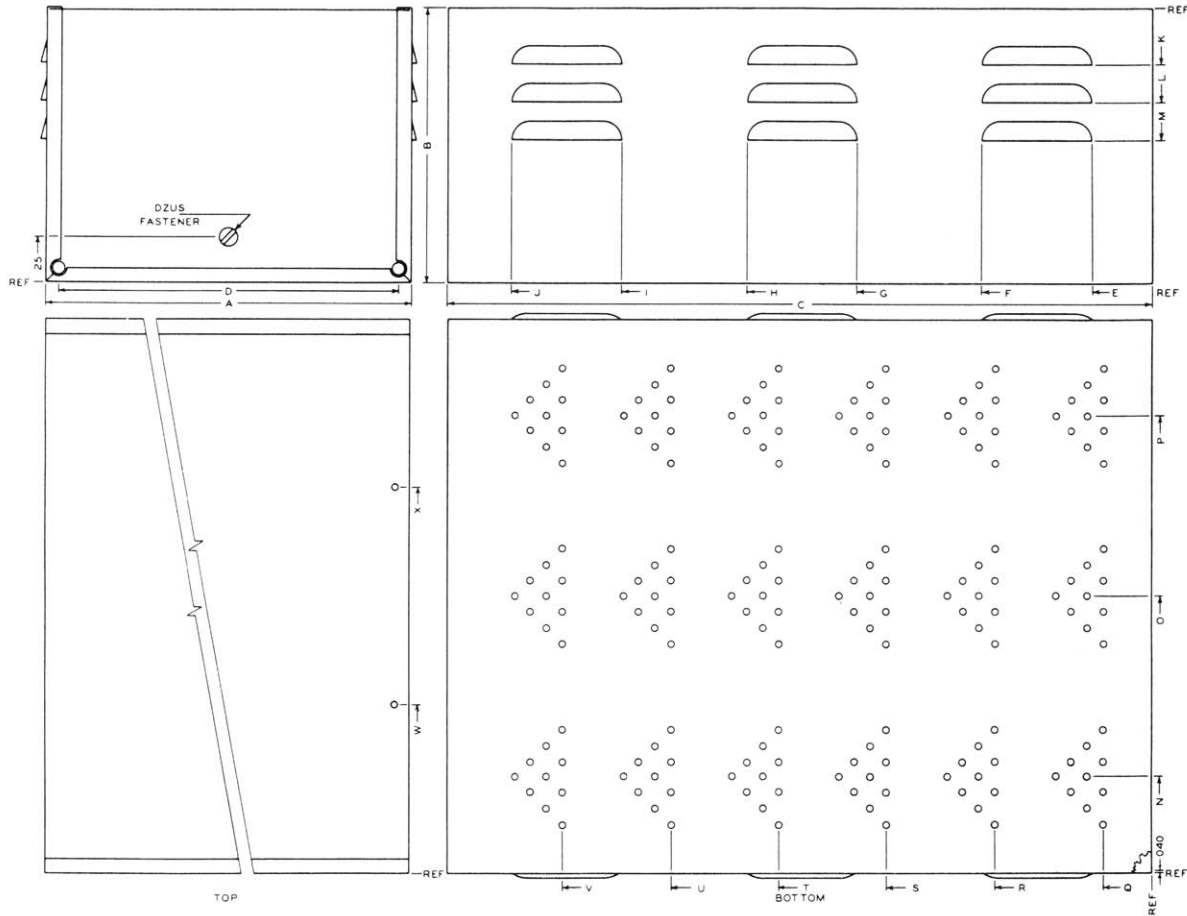


MIL-C-172 Large ATR Dust Cover

344 Franklin St. • PO Box 761038 • Melrose, MA 02176-0907 • Tel: 781-665-4700 • Toll Free 1-800-225-3932 • Fax: 781-662-5291 • sales@atrbox.com • www.atrbox.com



Catalog No.	Part of Military Designation	Dust Cover																			Ventilation Square Inches		Weight						
		W	H	L																	Side	Bottom	Lb	Oz					
		A	B	C	D	E	F	G	H	I	J	K	L	M	N	O	P	Q	R	S	T	U			V	W	X	Louvers	Vents
A1A-D	MS91403-A1A	4.88	7.61	9.55	4.13	3.25	6.25	0	0	0	0	1.56	2.62	3.69	0	2.44	0	1.38	4.38	7.38	0	0	0	2.44	0	2.2	1.47	0	15
A1B-D	MS91403-A1B	4.88	7.61	12.55	4.13	1.75	4.75	7.75	10.75	0	0	1.56	2.62	3.69	0	2.44	0	1.38	4.38	7.38	10.38	0	0	2.44	0	4.4	1.96	1	6
A1C-D	MS91403-A1C	4.88	7.61	15.55	4.13	3.13	6.13	9.38	12.38	0	0	1.56	2.62	3.69	0	2.44	0	1.38	4.38	7.38	10.38	13.38	0	2.44	0	4.4	2.45	1	13
A1D-D	MS91403-A1D	4.88	7.61	19.55	4.13	1.75	4.75	8.25	11.25	14.75	17.75	1.56	2.62	3.69	0	2.44	0	1.38	4.38	7.38	10.38	13.38	16.38	2.44	0	6.6	2.94	2	4
X1B-D	None	7.50	7.61	12.55	6.75	1.75	4.75	7.75	10.75	0	0	1.56	2.62	3.69	0	3.75	0	1.38	4.38	7.38	10.38	0	0	3.75	0	4.4	1.96	1	12
X1C-D	None	7.50	7.61	15.55	6.75	3.13	6.13	9.38	12.38	0	0	1.56	2.62	3.69	0	3.75	0	1.38	4.38	7.38	10.38	13.38	0	3.75	0	4.4	2.45	2	3
X1D-D	None	7.50	7.61	19.55	6.75	1.75	4.75	8.25	11.25	14.75	17.75	1.56	2.62	3.69	0	3.75	0	1.38	4.38	7.38	10.38	13.38	16.38	3.75	0	6.6	2.94	2	12
B1B-D	MS91403-B1B	10.13	7.61	12.55	9.38	1.75	4.75	7.75	10.75	0	0	1.56	2.62	3.69	2.56	0	7.56	1.38	4.38	7.38	10.38	0	0	5.07	0	4.4	3.92	2	4
B1C-D	MS91403-B1C	10.13	7.61	12.55	9.38	1.75	4.75	7.75	10.75	0	0	1.56	2.62	3.69	2.56	0	7.56	1.38	4.38	7.38	10.38	13.38	0	5.07	0	4.4	4.90	2	10
B2C-D	MS91403-B2C	10.13	10.61	15.55	9.38	3.13	6.13	9.38	12.38	0	0	1.56	2.62	3.69	2.56	0	7.56	1.38	4.38	7.38	10.38	13.38	0	5.07	0	4.4	4.90	3	3
B1D1-D	MS91403-B1D1	10.13	7.61	19.55	9.38	1.75	4.75	8.25	11.25	14.75	17.75	1.56	2.62	3.69	2.56	0	7.56	1.38	4.38	7.38	10.38	13.38	16.38	5.07	0	6.6	5.88	3	1
B1D2-D	MS91403-B1D2	10.13	7.61	19.55	9.38	1.75	4.75	8.25	11.25	14.75	17.75	1.56	2.62	3.69	2.56	0	7.56	1.38	4.38	7.38	10.38	13.38	16.38	5.07	0	6.6	5.88	3	1
B2D1-D	MS91403-B2D1	10.13	10.61	19.55	9.38	1.75	4.75	8.25	11.25	14.75	17.75	1.56	2.62	3.69	2.56	0	7.56	1.38	4.38	7.38	10.38	13.38	16.38	5.07	0	6.6	5.88	3	12
B2D2-D	MS91403-B2D2	10.13	10.61	19.55	9.38	1.75	4.75	8.25	11.25	14.75	17.75	1.56	2.62	3.69	2.56	0	7.56	1.38	4.38	7.38	10.38	13.38	16.38	5.07	0	6.6	5.88	3	12
C1C-D	MS91403-C1C	15.38	7.61	15.55	14.63	3.13	6.13	9.38	12.38	0	0	1.56	2.62	3.69	2.69	7.69	12.69	1.38	4.38	7.38	10.38	13.38	0	4.69	10.69	4.4	7.35	3	6
C2C-D	MS91403-C2C	15.38	10.61	15.55	14.63	3.13	6.13	9.38	12.38	0	0	1.56	2.62	3.69	2.69	7.69	12.69	1.38	4.38	7.38	10.38	13.38	0	4.69	10.69	4.4	7.35	3	15
C1D-D	MS91403-C1D	15.38	7.61	19.55	14.63	1.75	4.75	8.25	11.25	14.75	17.75	1.56	2.62	3.69	2.69	7.69	12.69	1.38	4.38	7.38	10.38	13.38	16.38	4.69	10.69	6.6	8.82	4	2
C2D-D	MS91403-C2D	15.38	10.61	19.55	14.63	1.75	4.75	8.25	11.25	14.75	17.75	1.56	2.62	3.69	2.69	7.69	12.69	1.38	4.38	7.38	10.38	13.38	16.38	4.69	10.69	6.6	8.82	4	11

For complete Case (chassis and dust cover assembly) omit (-D) from catalog number.